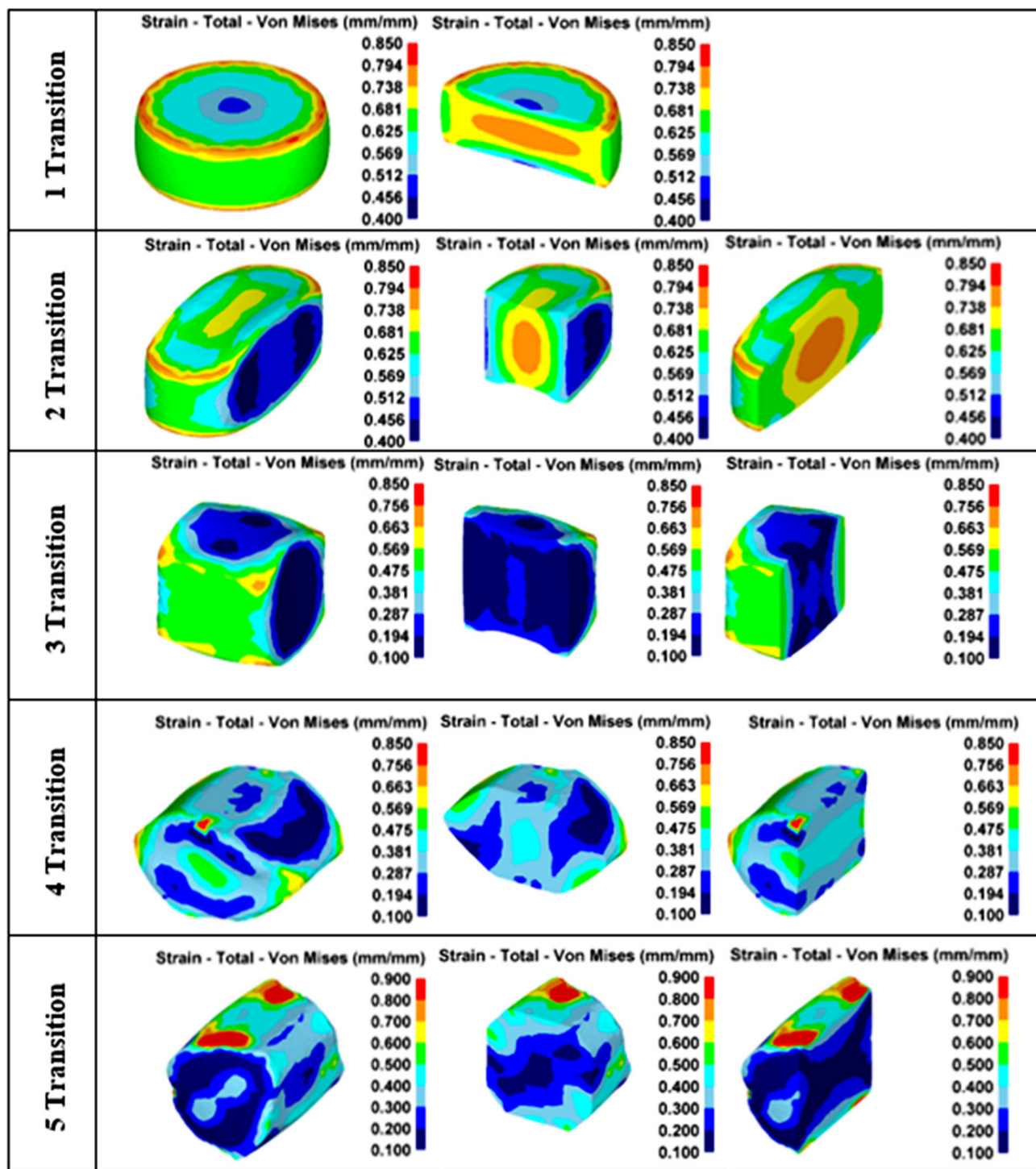


Supplementary material

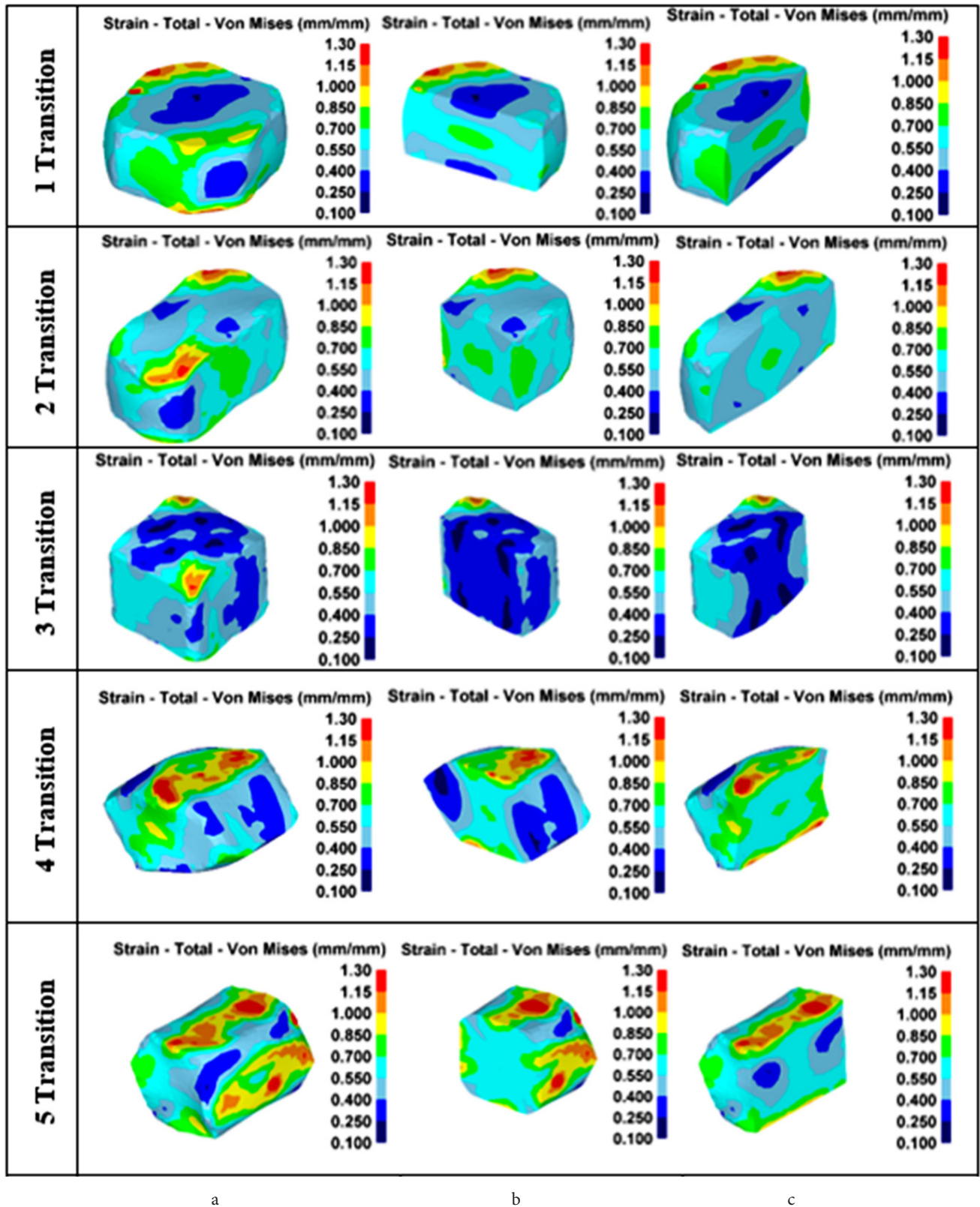


a

b

c

Fig. 51. (Color online) Diagrams of the distribution of equivalent strains in the sample at the MIF first step (950°C). Sample shown in general view (a) and two perpendicular sections (b, c).



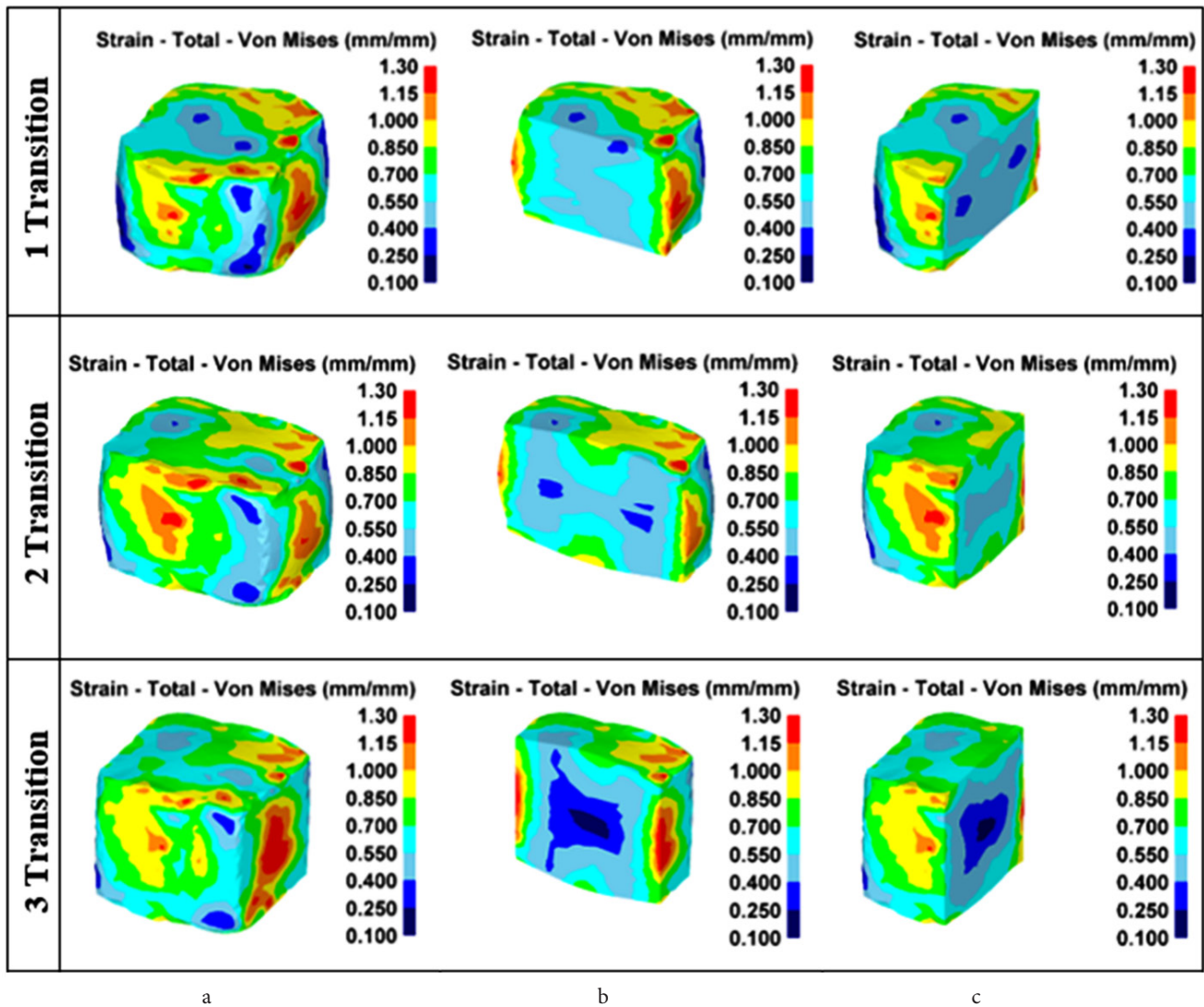
a

b

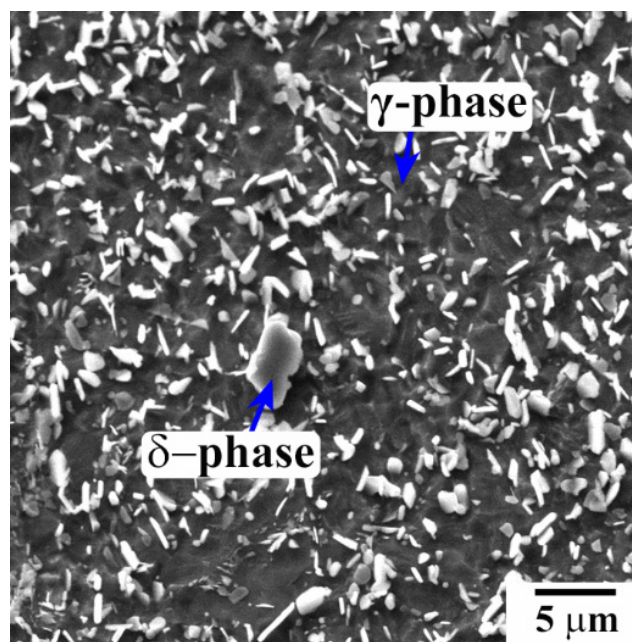
c

Fig. S2. (Color online) Diagrams of the distribution of equivalent strains in the sample at the MIF second step (900°C). Sample shown in general view (a) and two perpendicular sections (b, c).





**Fig. S3.** (Color online) Diagrams of the distribution of equivalent strains in the sample at the MIF third step (850°C). Sample shown in general view (a) and two perpendicular sections (b, c). Sample shown in general view (a) and two perpendicular sections (b, c).



**Fig. S4.** (Color online) Microstructure (scanning electron microscopy) of the EK61 superalloy after MIF at third step at a temperature of 850°C.